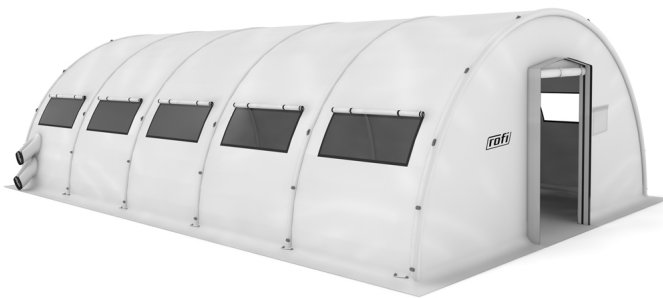




## ROFI RAPID 610 Inflatable Tent

### Product Images



### Short Description

ROFI RAPID 610 tent is a high pressure, medium weight inflatable shelter that requests a simple logistic support to deploy.

### Description

ROFI RAPID tent is a high-pressure, medium-weight inflatable shelter that requests simple logistic support to deploy. The set-up time depends on the power of the inflating compressor.

The RAPID 600 series comes in three different lengths of 6, 8 and 10 meters and a width of 6 meters as standard. They can be connected to each other length and crosswise and to other shelters like containers and vehicles, among others.

The tent is equipped with three-layer windows allowing natural ventilation, with curtains operated from the outside. The inner liner, RIS (ROFI insulation System) inner liner, for special climatic conditions, partition walls and flysheets are available booth for 2-door and 4-door models. The integrated anti-skid PVC flooring protects against surface water, reptiles or bugs.

### Advantages

- High-pressure structure - 87-116 psi with overpressure valves on air tubes
- Rapid - 1 or 2 air-filling points. 5-30 min setup time depending on the compressor type used
- Simple logistics - packed in standard pallets
- Multiple use - connectable to other ROFI tents and shelters

## Additional Information

---

Application area	Civil Defence, Triage, Field Hospitals, First Aid Posts, Decontamination and Hazardous Goods Operations, Accommodation and Catering, Police/Gendarmerie, United Nations, NGOs/Humanitarian organizations
Base area	60.00 m <sup>2</sup>
Width	6.00 m
Length	10.00 m
Height	3.00 m
Ridge height	3.00 m
Packing size	200 x 80 x 115 cm
Weight	354.00 kg